



# T E N N E Y - L A P H A M N E I G H B O R H O O D                      A S S O C I A T I O N

## NEWSLETTER

## WINTER 1994

### WINTER POTLUCK

**Thu., Jan. 27, 6-8pm  
Lapham Cafeteria  
1045 E. Dayton St.**

*Mark your calendars now!  
After all the holiday hoopla has  
subsided and winter has really  
set in, come and warm up with  
your neighbors at our very popu-  
lar potluck supper.*

*Plates, cups, and utensils  
will be provided, along with tea,  
coffee, milk, and apple cider.  
Adults \$1; children (under 12)  
50¢.*

*You are invited to bring a  
favorite board game or special  
toy to share.*

**Food to bring:**  
A-G: Soup or salad  
H-S: Main course  
R-Z: Dessert

### Lapham School Events

**HOLIDAY LUNCHEON**  
Thu., Dec. 16, 11:30am-1pm  
Cafeteria—Everyone welcome!

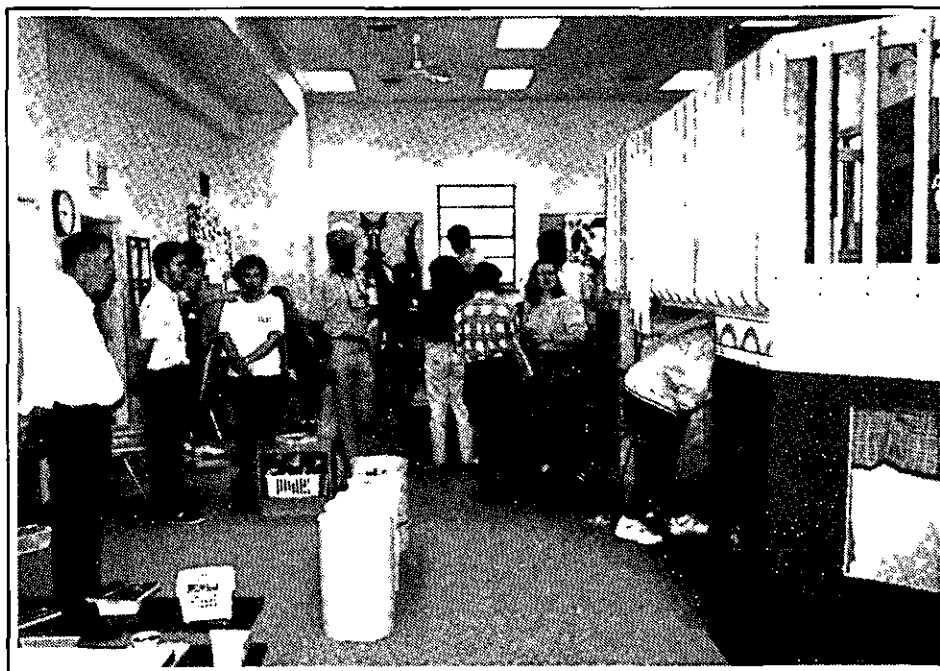
## TENNEY NURSERY OPENS NEW HOME

On a beautiful October after-  
noon Tenney Nursery's Director  
Nancy Daly cut the ribbon span-  
ning the newly constructed en-  
trance. Alderman Dave Wallner  
and Alan Crossley joined Nancy  
at the podium. The speakers were  
introduced by Jill Matzke.

In all corners of the courtyard  
people were gathering around.  
The words of the speakers, relat-

ing the history and the highlights  
of what made the event possible,  
echoed softly through the air. It  
was a very special moment. A  
quiet enjoyment pervaded the  
atmosphere. There was a warm  
and happy feeling in everyone's  
heart. The parents, families,  
friends, and neighbors gathered  
in the courtyard that day seemed

*(continued on page 3)*



Teachers, parents, and children check out the facilities during the Grand Opening of the new Tenney Nursery & Parent Center, 1321 E. Mifflin St.

## 1992 TLNA NEIGHBORHOOD COUNCIL

PRESIDENT	Richard Linster	432 Sidney	251-1937
VICE PRESIDENT	Rob Latousek	407 N. Brearly	255-6979
SECRETARY	Lynn Schmidt	1127 E. Gorham	256-1360
TREASURER	Ed Jepsen	445 N. Few	255-2845
BUSINESS	Ellen Zografi	819 E. Johnson	251-2583
EDUCATION	Deb Meyer	1141 Elizabeth	257-2578
HOUSING	Joe Brogan	437 N. Few	257-2010
MEMBERSHIP	Richard Linster	432 Sidney	251-1937
PARKS	Rick Bernstein	309 Norris Court	251-4615
PUBLICITY	Rob Latousek	407 N. Brearly	255-6979
SOCIAL	Anne Katz	419 Jean	256-2958
	Rebecca Bernstein	309 Norris Court	251-4615
TRANSPORTATION	Tom Sullivan	1122 E. Gorham	258-9781
	Tim Olsen	1331 E. Johnson	255-9358
AREA A Rep.	Larry Godding	1325 E. Dayton	255-4168
AREA B Rep.	Dennis Rinzel	941 E. Dayton	255-7189
AREA C Rep.	Ann Rulseh	1217 Elizabeth	257-8695
	Roger Bowden	443 Sidney	258-8666

## ELECTED GOVERNMENT REPRESENTATIVES

City Council	David Wallner	419 Jean St.	256-2958
County Board	Judy Wilcox	620 E. Dayton St. #10	255-8913
State Assembly	Tammy Baldwin	100 N. Hamilton #314	266-8570
	P.O. Box 8952	Madison, WI 53708	
State Senate	Fred Risser	235S State Capitol	266-1627
	P.O. Box 7882	Madison, WI 53707	
U.S. House	Scott Klug	16 N. Carroll #600 (53703)	257-9200
U.S. Senate	Herbert Kohl	14 W. Mifflin #312 (53703)	264-5338
	Russell Feingold	8383 Greenway, Middleton 53562	828-1200

*The Newsletter of the Tenney-Lapham Neighborhood Association is published quarterly and distributed without charge to all households in the Tenney-Lapham Neighborhood (delineated by Lake Mendota, North Livingston Street, East Washington Avenue, and the Yahara River). Requests for information regarding submissions and advertising may be directed to: TLNA, P.O. Box 703, Madison, WI 53701; or call Publicity Chair listed above.*

## EDUCATION

*(continued from page 1)*

to know the meaning and magnitude of what had been accomplished. The opening of this nursery facility was a staggering achievement by any measure. To those that were there from the beginning it must have seemed like a miracle.

A former woodworking shop had been transformed into play spaces. Outside there is a beautiful deck, a sand box, things to climb up on, mounds to roll down from, trees and bushes and grass. Inside, play spaces include lofts and books, tables and easels, and a vestibule where the sun shines in from the skylights, windows, and doors. There is also a spacious gym area and a kitchen where the sounds from the kids in last week's lunch bunch could almost be heard still reverberating.


Touring around the facility was a truly uplifting event. It is a beautifully elegant place thoughtfully created for children. The teachers were proudly there in the classrooms, answering questions, and talking to visitors. There was

even the pleasure of meeting the parents of one of the teachers.

The celebration included many different refreshments. There was a lot to celebrate about. People were sharing their feelings. I heard the words "barn raising" mentioned several times. It was a phrase that seemed to fit. Volunteers had donated more than 5,000 hours of labor. Substantial amounts of money had been donated, as well as food, equipment, and other things. Those that helped to raise a barn in the old days must have felt pretty good about themselves.

The Tenney Nursery & Parent Center is located at 1321 East Mifflin Street. TNPC is a nonprofit parent cooperative offering a variety of nursery school classes for children 0-5 years of age. Summer school serves children up to 6 years old. There are both full and part-time programs. Openings are available. For more information or to arrange a visit, contact the Director, Nancy Daly, at 255-3250.

*Joe Brogan*



mark bocksch

**the neon room**

(608) 251-3722  
836 e. johnson • madison, wi. 53703




924 E. Johnson St. Telephone  
Madison, WI 53703 (608) 251-2777



**SPRUCE TREE MUSIC  
& REPAIR INC.**

New, Used & Vintage  
Fretted & Stringed Instruments  
Lessons - Records - Accessories

851 E. JOHNSON 255-2254



There's a new store in your neighborhood!  
Come see us!

We have:  
Candles, Jewelry, Incense, and much more.  
845 E. Johnson St. 255-9022

## PRESIDENT'S REPORT

Our new neighborhood council has met twice since the annual meeting, most recently in the new Tenney Nursery and Parent Center. We have had some opportunity to exchange thoughts, ideas, and visions of and for our neighborhood and the association.

We aim at striking a balance between a lighthouse (essential vision and projection of it) and a very practical organization. Anyone who has spent any time in the area could not help but notice a general betterment of the area.

The TLNA's primary role has been to improve the neighborhood by democratic citizen involvement. We have carefully cultivated and sustained a strong neighborhood spirit. We have acted to anticipate and publicize trends and problems before they attain crisis proportions, fostered interest and participation in planning, provided the means for study and discussion of

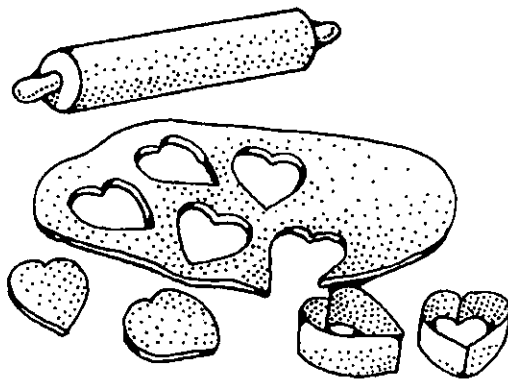
neighborhood issues and questions, educated residents in the processes, problems and potentials of the neighborhood, and advocated policies and programs in the best interest of the neighborhood.

TLNA has provided a framework by its organization and the work of its officers, committees, and members. No one person or group of persons has been responsible; we have all been responsible—members and nonmembers.

We are at the beginning of a new planning opportunity (see article on CDBG) which should yield considerable benefits, but I think that separately we will develop new initiatives to include groups in the neighborhood heretofore not involved: the elderly, minorities, renters, students, youth. What we will continue to need is you!! We hope to have your ideas and help. Till next time,

*Richard Linster, TLNA President*

Season's  
Greetings



## Raw Materials

Vibrant fresh-cut flowers.

## for Your

Essential Baking Supplies.

## Holiday

Fragrant spices in bulk.

## Imagination

Fabulous organic produce.

**Williamson Street Grocery Cooperative**

■ 1202 Williamson St. ■ 251-6776 ■ Open 8 - 9 Daily

# ASSEMBLY REPORT

Dear Friends,

I'm pleased to have this opportunity to share information with you about some of the issues before the Legislature this session. We have recently concluded a busy Fall Floor Period. For me personally, it has been an exciting and challenging 11 months since taking office as your State Representative, filled with both achievements and disappointments.

## LONG-RANGE CORRECTIONS STRATEGY:

I was honored to be the first freshman legislator ever selected chairperson of a major Assembly committee, the Committee on Elections, Constitutional Law and Corrections. Reform of our correctional system and campaign finance reform are two of my top priorities. I intend to use my position as chairperson of this committee to see progress on both of these fronts.

I believe that I have already influenced the policies of the Department of Corrections in a positive manner. I hope to help develop and implement a long-range strategy that will, over time, reduce reliance on incarceration and focus more attention and resources on alternative correction strategies and prevention of crime. For too long "prevention" has been merely a "buzzword" that maximizes expectations, but minimizes results. By focusing on the conditions that lead to crime (issues such as child abuse, poverty, lack of health care, mental illness, racism, and drug and alcohol abuse), I hope to improve conditions in our state.

**BUDGET BILL:** The budget bill dominated much of the Legislature's time the first seven months of our session. I voted against the budget bill for many reasons. I was very disappointed that school aids for the Madison Metropolitan School District were actually reduced and that arbitrary wage controls were unfairly imposed on a single group of people: public school teachers. I believe that education of our children must be a top priority and that teachers must not be made political pawns in the property tax relief battle.

We are not going to solve our property tax problems until we restructure our entire tax system, by shifting funding for schools from the property tax to a more progressive tax such as the income tax. I strongly support such a real and lasting solution to the related problems of unfair taxes and inequitable school funding.

**PROBLEM-SOLVING BILLS:** I'm proud to report that I have already had two bills, that I introduced to solve concerns that constituents brought to my attention, become law. One bill helps museums deal with the problem of loaned property that has been abandoned by the owner. Before the bill became law, museums did not have the ability to sell or give away property that was loaned to them, even if the owner could no longer be located. The bill allows museums to take ownership of abandoned property after attempting to contact the owner through various mandated means and requires that museums

*(continued on next page)*

## A difference you can count on.

Your Full-Service, Neighborhood Credit Union!



- Loans
- Savings
- Checking/TYME
- Savings Insured to \$100,000 by NCUA
- Investments
- Mortgages/Construction Loans
- MasterCard/Visa

944 Williamson Street  
In the Third Lake Market

**282-7050**

(continued from previous page)

keep accurate records of property loaned to them.

The second bill I sponsored which became law allows parents or guardians who are not licensed drivers (for example, parents with disabilities) to designate another adult to accompany their child as he or she learns to drive with an instructional permit. Prior to enactment of this new law, in the event that the parent or guardian of a child with an instructional permit was not a licensed driver, no statutory authority existed for a parent or guardian to designate another licensed adult to act in his or her stead.

**HEALTH CARE REFORM:** In the second half of the legislative session, we will tackle several important issues, including health care reform. I am the coauthor of a bill that establishes a universal single-payer, publicly financed health care system for all Wisconsin residents. I have serious reservations about the Governor's health care

reform proposal, the Wisconsin Health Care Partnership Plan. This plan fails to cover the vast majority of the almost 500,000 uninsured people in the state. I firmly believe that health care should be a right, not a privilege. These and other proposed health care measures will come before the Assembly Health Committee on which I serve.

I always appreciate hearing from you on these and any issues that are of concern to you. If you ever think I can be of assistance in resolving a problem related to State government, please feel free to contact me or visit me at my office:

100 N. Hamilton Street, Room 314

Mailing address: P.O. Box 8952

Madison, WI 53708-8952

Phone: 266-8570

I appreciate the help and support I've received from so many residents of the Tenney-Lapham neighborhood and look forward to working with you in the months ahead. Happy Holidays!

*State Rep. Tammy Baldwin*

May we recommend:



## crafts of the world

### *Their Mission:*

SELFHELP Crafts of the World provides vital, fair income to Third World people by selling their handicrafts and telling their stories in North America. We work with artisans who would otherwise be unemployed or underemployed. This income helps pay for food, education, health care and housing.

We encourage artisans to develop their skills; we help craft groups establish self-sustaining businesses that provide steady employment. We foster respect for the environment.

We promote international understanding by sharing the stories of our world neighbors; by exploring and communicating the causes of poverty and dependence; and by enabling customers, volunteers and staff to form international partnerships with Third World artisans.

SELFHELP Crafts is a nonprofit program of Mennonite Central Committee, the relief and development agency of Mennonite and Brethren in Christ churches in North America. SELFHELP Crafts has worked with people around the world since 1946.

### *Their Principles of Operation:*

SELFHELP Crafts is a nonprofit, self-supporting organization.

1. We work with disadvantaged artisans.
2. We purchase from craft groups that are concerned for their members and that promote member participation.
3. We pay fair prices for handicrafts. We pay promptly.
4. We pay up to half the value of a handicraft order when it is placed; the balance when the items are shipped to North America. This provides operating capital for artisans to purchase raw materials and for craft groups to pay workers.
5. We offer handicrafts that reflect and reinforce rich cultural traditions.
6. We promote fair trade.
7. We use marketing strategies and messages consistent with our mission and ideals.

*Holiday shopping is always interesting at Green Earth. Gifts from around the world and much, much more.*



*Products from nature's pharmacy  
for your health and the health  
of your environment*

Lynn La Luzerne  
David La Luzerne, R.Ph.

2094 Atwood Ave. Madison, WI 53704  
244-9297

## SUPERVISOR'S REPORT

The County Board is rapidly approaching the end of the 1994 budget process, and it appears that several issues important to the residents of the Tenney-Lapham Neighborhood will make it through the budget process. Funding for **Group Access Services** is set at \$116,000; this means that transportation services can be provided to elderly and disabled persons at the same level as in past years, hopefully with a reduction of fares. I will continue working to better coordinate city and county transportation services as a member of the Transportation Committee, as well as the Subcommittee on Transportation, which is operating under the auspices of the Ways and Means Committee. I am particularly interested in seeing a better method evolve for determining where we direct our state and federal funds for transportation, seeing that transportation planning is one of the aspects of the proposed planning department.

The initiation of a **County Planning Department** was one of my major concerns when I ran for the Second District County Board seat in 1992. I am very pleased that there seems to be a **consensus of opinion** on the County Board toward the necessity of establishing a Planning Department. The primary concern now appears to be when it will occur, not whether it will occur. With the potential for an **additional 50,000 persons** in Dane County by the turn of the century,

it is imperative that we direct our attention to **planned growth** in the rural areas of Dane County if we want to preserve the quality of life we all enjoy.

I am continuing to raise concerns on the Board regarding the significant **capital expenditures** which are being proposed for county participation over the next few years. The **Dane County Expo Center**, the **Convention Center**, the **Jail**, and the proposal for a new **Courthouse** will all have enormous impact on the **tax levy** over the next several years. Although we continue to see healthy returns on the county **sales tax revenue**, it cannot hope to keep up with the continued commitment to capital projects. I hope that you will contact me and express your concerns and opinions regarding the Courthouse, since this appears to be a topic which is not going to go away in the near future.

Several "**Aging**" issues have come to the forefront since the **Ways and Means Committee** began meeting on the budget. Two budget amendments have been proposed which would have direct implications for the Second District. The first is a proposal for the distribution of aging funds which would take into consideration a variety of demographic factors. The **Aging Commission** has worked over a two year period to come up with a formula that would treat all

*(continued on next page)*



**Allegro Piano Service**

TUNING • REGULATION • REPAIR  
MARTHA KILGOUR 256-3230  
332 MARSTON AVE. MADISON WI 53703



**FUTONS  
FRAMES  
COVERS**

**Affordable  
Futons**

Hours: M-F 11-6, Sat. 10-5, Sun 12-4  
824 E. Johnson St. • 258-9888

(continued from prev. page)  
 communities in Dane County equitably. Unfortunately, a budget amendment has been proposed with a different formula, not developed by the Aging Coalition, which does not allocate the funds on as fair a basis as the original proposal. Hopefully the full board will recognize the hard work that went

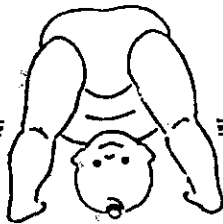
into the initial development of the formula by the Aging Commission and will approve their proposed formula.

The second aging issue has to do with the distribution of the funds collected as donations at the nutrition sites. Currently, nutrition participants donate about \$300,000 annually toward the cost of nutrition services. These donations are collected and submitted to Dane County, and they are used to offset the cost of the nutrition expenses. The intent of the proposed amendment would return half of the donations collected by each nutrition site to that site. In essence, what this would do is make the rich nutrition sites richer and the poorer sites poorer. Areas like the Eastside and South Madison would be hard hit if this decision is passed. I am working to defeat the proposed change.

As the budget process nears the end I am happy to say it looks as though the county tax levy will be decreased from \$4.41 per thousand in 1993 to—and this a guess—\$4.34 per thousand in 1994. Of course I can't make any promises since the full board has not completed the budget deliberations.

I have enjoyed my tenure on the County Board over the past two years, and I hope I have represented the views of the majority of my constituents. I have appreciated the contact from the citizens of the Second District, especially regarding the Convention Center and the continued funding for Group Access Services. I am planning on running for the Supervisor seat again in 1994, and I hope you will let me continue to serve you. Call me at 255-8913 and let me know of your concerns. Thanks!

*Sup. Judy Wilcox*



\$20 OFF

\$20 OFF

**MOTHER NATURE'S  
 DIAPER SERVICE**

**BEST**

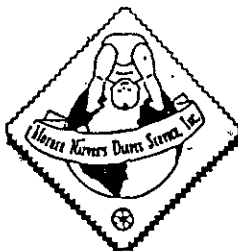
For You & Your Baby  
 and

**RIGHT HERE**

**IN YOUR**

**NEIGHBORHOOD.**

**\$15** off your first  
 month of service and an  
 additional \$5 off when you  
 trade in any out-of-state  
 diaper service hamper!



**251-BABY**

**DR. YVONNE MURPHY**  
 608-251-1518



1053 Williamson Street  
 Madison, WI 53703

**BEADS! BEADS!  
 BEADS!**  
 at  
**THE  
 BLUE BEAD**

A Crossroads of History,  
 Culture and Craft



Large Selection  
 of Beads  
 and Beading Supplies  
**819 E. Johnson \* Madison**  
**251-2583**



# HOUSING & BUSINESS

## NEIGHBORHOOD GETS PLAN GRANT

Recently the Community Development Block Grant (CDBG) Commission selected Census Tract 18 which includes all of the Tenney-Lapham Neighborhood, along with that part of the Old Market Place Neighborhood east of Blair Street, as a concentration area (where 47.5% or more of residents' incomes are "low to moderate," which is defined as 80% or less of Madison's median income).

A three-year schedule will be established that will target one year of planning assistance to neighborhood associations for preparation of a neighborhood plan, followed by two years of funding (a total of approximately \$140,000) for projects of high priority to the CDBG Commission. The City uses its CDBG funds to make Madison a more viable urban community and uses the following five major goals to shape its overall community development program:

1) *Improve Madison's housing,*

- 2) *Develop Madison's economy,*
- 3) *Strengthen community services,*
- 4) *Revitalize selected concentration areas,*
- 5) *Plan and administer programs effectively.*

This represents to TLNA and OMPNA a significant opportunity to have a direct impact on our future and builds on similar activities started earlier this year by the CDBG in the Marquette and Schenk's-Atwood neighborhoods. We will give this matter the greatest possible publicity and hope to have a meeting devoted to it. Mayor Soglin will appoint a committee of some fifteen in the near future. I would like to encourage residents to consider serving and to contact the Mayor's Office, Alder David Wallner, the CDBG office, or TLNA with questions or information and consideration for appointments.

Be forewarned that you can expect at least two meetings per month for one year if selected, so be reasonably sure of your commitment.



**UNION  
TRANSIT**  
of Madison  
WORKER OWNED AND OPERATED

**Safe** **Reliable**  
*Wheelchair Accessible Service*  
**242-2022**

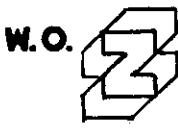


**Quality hardwood furniture**  
**Handcrafted to order**  
1257 E. Johnson 251-2441

James Glueck AIA  
(608)251-2551

**glueck architects**  
926 East Johnson Street • Madison, WI 53703

DAVE ZIMMERMAN



**PLUMBING • HEATING**  
**AIR CONDITIONING • SHEET METAL**

811 E. JOHNSON STREET  
MADISON, WISCONSIN 53703

Res. 249-6773  
Bus. 256-0265

# MEMBERSHIP

## JOIN TLNA!

Send this form with dues to: TLNA, P.O. Box 703, Madison, WI 53701.

Annual dues (minimum):

Adult (ea.) \$2.00

Senior 1.00

Business 5.00

Additional contributions welcome!

Name: \_\_\_\_\_

Address: \_\_\_\_\_

Phone: \_\_\_\_\_

Tax-deductible donations to our Parks & Schools Fund can be made out to: Tenney-Lapham Corp.

As of November 15 the TLNA Membership Committee has collected \$719 in dues and \$377 in parks/school contributions from 253 members. The winter activities will slow down while we analyze our records and plan for next year.

Consider representing the TLNA as a block captain in your own local area. The time investment is small, but rewards are great both personally and for the organization. Try acting as the eyes and ears of the asso-

ciation which has an increasingly persuasive voice.

To get involved call Richard Linster, Membership Chair, 251-1937 or Ed Jepsen, Block Captain Coordinator, 255-2845.

*Bahn Thai*  
RESTAURANT

Authentic,  
Flavorful & Spicy  
Cuisine of Thailand

Voted Best  
Asian Restaurant  
by Isthmus Readers

Dine In/Delivery/Carryout  
Daily 11AM-10PM (Sun 5-10PM)

East - 944 Williamson St. 256-0202

West - 2809 University Ave. 233-3900



## MARANGO CARPET UPDATE SECOND TO NONE COMMERCIAL & RESIDENTIAL CARPET CLEANING

Safe, Non-Toxic • Professional • Locally Owned  
Fully Insured • Super Low Price  
Free Estimates • Pet Odors • 24 Hour  
10% OFF if you mention this ad  
"We Do It All For Less"  
Call David Wilsher 258-9004  
1247 East Dayton Street

## We Wish You The Best This Holiday Season

### We Have

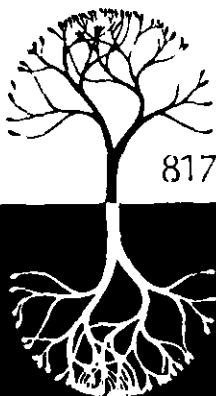
Bulk Herbs and Spices

Dried Fruits and Nuts

Candles, Books

& Essential

Oils



817 E. Johnson, Madison. 256-8828

# WHOLE EARTH NATURAL FOODS



## CORK 'N BOTTLE

10% Discount  
on 6 or more  
bottles of  
wine.  
Mix or match

Liquor Store  
and  
Alternative  
Think Tank

Over 30 Years on  
East Johnson Street  
Featuring a Wide Selection of  
Imported & Domestic Wines,  
Liqueurs, Beers, Ideas,  
Opinions & Employees  
855 E. Johnson St. 256-3620

## ALDER'S REPORT

**CITY BUDGET REVIEW:** The Common Council approved the 1994 budget on Nov. 9, and it calls for a 4.59% total increase over the 1993 budget. The mill rate will actually drop from 10.29 to 10.10, while the property tax levy will increase 6.4%.

Key items in the budget include: the hiring of 15 additional police officers and four new firefighters; continuation of the city's anti-drug "Weed and Seed" program; funding to begin the eastside Capital Bikeway; the status quo for bus fares and bus service, pending a major overhaul of routes for 1995; an additional one million dollars in federal HOME monies for housing; additional staff help for neighborhood planning initiatives; an increase in lifeguard hours at public beaches; a new optically-scanned paper ballot voting system for future elections; street lighting improvements to enhance security in residential neighborhoods; a stronger graffiti removal effort in the Streets Department; and an expanded Youth-Business Mentoring Program to help teenagers, especially those living on the eastside, find jobs and training with the private sector.

The Second District also fared well in the final budget, especially for future park improvements. Projects that I worked on for 1994 include:

- New playground equipment for Reynolds Field on Dayton (\$10,000)
- New lakeshore path linking the two parts of James Madison Park (\$15,000)
- Major renovation of the Hoover Boathouse in James Madison Park (\$35,000 in city funds, plus federal dollars)



### Papendieck's Upholstery

821 E. Johnson St.  
Madison, WI 53703  
Tel: 255-5404

FOR THE OFFICE, HOME, & RESTAURANT  
Greg Papendieck, Owner

- Repair of the Marston Bridge in Tenney Park (\$30,000)
- Accessible picnic tables for Tenney Park (\$3,000)
- New landscaping along the Yahara River (\$5,000)
- Accessible path for Tenney Park (\$20,000 in 1993 carry-over dollars)

Several blocks of streets will be reconstructed next year within the district. These include Brearly from East Washington to Mifflin, and Ingersoll from East Washington to Gorham.

Overall it was one of the least controversial budget processes in recent years, thanks in part to excellent planning efforts by Mayor Soglin, his staff, and department leaders.

**PARK PLANS:** I was extremely pleased with the final outcome of the 1994 budget, which will lead to major park improvements throughout our neighborhoods. My personal two top priorities—a new playground at Reynolds Field and construction of a new lakeshore path at James Madison Park—were both approved.

The play equipment at Reynolds is aging rapidly, and most of the old structures will be replaced with new and improved equipment. And the new path for James Madison is phase one of a broader plan to expand the park and make the under-utilized portion behind the Lincoln School Apartments more accessible for park users. I'll be meeting with neighborhood residents within the next few months to discuss these park plans.

*(continued on next page)*

### KIES ANTIQUES

*Buy & Sell*

807 East Johnson Street  
Madison, Wisconsin 53703  
Telephone 608-255-6222

*Established 1972*

*Harry Kies, Proprietor*

(continued from previous page)

**One final note for soccer fans:** The Parks Department will close Reynolds Field next spring for organized sports activities, to allow staff to replenish the sod and playing surface. New soccer goals will be installed at Tenney Park, and most of the teams that have been using Reynolds Field may be shifted over to Tenney.

**CDBG DOLLARS ON THE WAY:** I've been working with staff in the Community Development Block Grant office for over a year to designate the district as a concentration target neighborhood for federal CDBG dollars. Former TLNA president Ed Jepsen and I both spoke recently before the CDBG Commission, which approved our request. The 18th Census Tract was then chosen for the 1994 planning process. The area runs from North Blair Street east to the Yahara River, north of East Washington Avenue to Lake Mendota. It includes all of the Tenney-Lapham neighborhood and about half of the Old Market Place neighborhood.

A steering committee will be approved by the CDBG staff, the mayor, and the City Council. The committee, made up of area residents, will meet during 1994 to help set priorities and will work with city staff from various departments to create a neighborhood plan. The plan will be implemented from 1995-96.

Up to \$150,000 in block grant funds could

be available for projects selected by the steering committee. These federal dollars can then be leveraged with city assistance to make major improvements in the two neighborhoods. Block grant dollars can be used for a wide array of project, including housing improvements, park equipment, streetscape improvements, etc. If you're interested in lending a hand for this important effort, give me a call at 256-2958. Once a steering committee is selected, we should get started on the planning process by February.

**NEW LIFE FOR EENA?** The East-Emerson Neighborhood Association was an active organization during the last decade—one of the best associations in the entire city. However, because of families moving out of the area and "burnout" that struck former leaders, the organization hasn't been active for several years.

But Bob Gibbons, 1954 E. Washington, would like to revitalize the organization. Bob has been a leader with Madison Mutual Housing for several years, and now he wants to put some time and effort into helping his neighborhood. If you or someone you know is interested in working with Bob, give him a call at 244-0582. It's a noble cause, and one that I'd be willing to support as much as possible.

**A NEW HOME FOR TNPC:** I recently attended and spoke at the grand opening of the Tenney Nursery and Parent Center. It was a bright, beautiful fall day, and the smiles on the faces of parents and kids alike were infectious. The nursery has been a mainstay in the neighborhood for many years, and its new home on East Mifflin will add life and vitality to that block. I'd like to extend my personal thanks to Nancy Daly, her hard-working staff, and the TNPC board, who made the project a dream come true.

And last but not least, my wife Anne and I would like to extend a warm holiday greeting to one and all. Stop on by over the holiday season for a cup of hot cider or tea.

Ald. David Wallner

**Mildred's**  
Sandwich Shop

OPEN  
11-10  
DAILY

Beers:  
Imported  
Domestic

Homemade Soups  
Salads Sandwichs carryouts

827 E. JOHNSON ST. 4 255-2460

# HISTORY

## A STREET BY ANY OTHER NAME

Street and place names in the Tenney-Lapham neighborhood are illustrative of not only our neighborhood's history but that of the city, state and country. The next time you are out biking or walking, perhaps these names can help you imagine our neighborhood in an earlier time.

Most of the major streets are named after signers of the Constitution: Nathaniel Gorham (MA), Roger Sherman (CT), William Livingston (NJ), David Brearly (NJ), William Paterson (NJ), Jona Dayton (NJ), Thomas Mifflin (PA), Jared Ingersoll (PA), John Dickinson (DE), John Blair (VA), William Few (GA), Abraham Baldwin (GA), and William Samuel Johnson (CT).

On old maps of the city, Paterson Street had two 't's in it. James Doty, the founder of Madison, is believed to have gotten his spellings of the constitutional signers from a Michigan law book that had erroneously spelled the name as William Patterson. Even up until the middle of this century there was confusion on city maps and street signs. However, it is Paterson with one "t"; Paterson, NJ, is also named after him.

There are three major parks in the neighborhood: Tenney Park, Reynolds Park and Giddings Park. Daniel K. Tenney (1834-1915), a Madison lawyer, civic activist and parks advocate; was instrumental in the formation of Tenney Park. Henry Reynolds, a mayor in Madison from 1961-1965, was also president of the moving company still located on East Mifflin Street. And Giddings Park is named after the family whose home was previously located on the northeast side of the block on which Christ Presbyterian Church now stands. The park used to go from Gorham Street to the lake along Brearly, but the church swapped its lakefront section with the city for the street frontage to expand its visibility and parking area.

Increase Lapham (1811-1875) was a pioneer Wisconsin naturalist and is often called the first Wisconsin scholar and ecologist. Breese

Stevens (1834-1903) was a Madison mayor in the 19th century. Yahara is said to come from the Winnebago word meaning "catfish"; and Mendota is from the Dakota word meaning a confluence of rivers.

Castle Place, the street on the southwest side of Christ Presbyterian Church, is named for a castle-like house which was built on the top of the hill there in 1863 by Benjamin Walker. Its bricks can still be seen in a house at 137 East Gorham Street. Cadwallader Washburn (1818-1882) was a Wisconsin Governor in the 19th century; Washburn Observatory on the U.W. Campus is also named after him. C.C.G. Thornton owned property in what is now a part of Tenney Park. And J.J. Marston was a wealthy Madisonian during the 19th Century. Prospect Place was platted in 1901; "prospect" in Latin means to look forward and is used in this context as looking forward to a view of Lake Mendota.

Curtis Court was named after Dexter Curtis, who ran the Collar Pad Factory there in the latter half of the 19th century. In 1872 he received a patent for his zinc collar pad, which helped prevent neck gall, a common problem for livery horses.

If you have any information on Russell Walk or Jean, Elizabeth and Sidney streets, please contact the Editor so we can publish it.

Oh, and one last street—lest you think East Washington Avenue was named after a famous cherry-tree hacker—this being Madison and the near east side, some say it was really named after Martha!

*Bob Shaw*

**TRAFFIC! TRAFFIC! TRAFFIC!**  
**Problems? Ideas? Comments?**

Contact the new Traffic SWAT Team!  
(aka TLNA Transportation Committee)

Tom Sullivan 1122 E. Gorham 258-9781

Tim Olsen 1331 E. Johnson 255-9358

# 1994 BUDGETS

Below is the proposed TLNA Budget for the coming year. If you have any feedback or questions for the Neighborhood Council before they vote on it, please contact one of the Council members (see page 2) by December 13.

ITEM	INCOME	EXPENSE
Administration		100
Bank Interest/Fees	150	50
Membership Dues	1250	150
Newsletter	2600	2600
Publicity		100
Social Events		
Winter Potluck	100	100
Pancake Supper	175	125
Ice Cream Social	100	100
Spaghetti Dinner	200	100
Hall Rental Fees		150
Donations		
Fair Housing Council		25
Tenney Nursery		100
Welcome Garden		100
<b>TOTALS</b>	<b>4575</b>	<b>3800</b>


Below is the proposed TLC Budget (also known as the Parks & Schools Fund) for the coming year. If you have any feedback or questions about it, please contact the Vice President, Treasurer, or Parks Chair (see page 2).

ITEM	INCOME	EXPENSE
Administration		45
Bank Interest/Fees	35	50
Breakwater Project	500	500
Welcome Garden	200	200
People for Parks	200	200
Reynolds Garden		100
Giddings Garden	100	100
School Donations:	400	
Marq/Lapham PTG		100
Lapham Elem. Sch.		100
Marquette Mid. Sch.		100
East High School		100
<b>TOTALS</b>	<b>1435</b>	<b>1595</b>

LET SLEEPING DOGS LIE  
Call the veterinarians that make

## HOUSECALLS

DR. DEB SCHROEDER



**CITYWIDE PET CLINIC**  
**255-2977**

## BURNIE'S ROCK SHOP

- JEWELRY • FOSSILS
- LAPIDARY • MINERAL
- SETTINGS • SPECIMENS
- GEMSTONES

**901 E. JOHNSON**  
**251-2601**



## SAFARI GALLERY & BOUTIQUE

823 E. Johnson St. African Fabrics, Clothing, Art,  
Madison, WI 53703 Sculptures & Hand Crafted  
Telephone: 259-8280 Gifts for All Occasions

## Strandberg Painting

Fine Residential  
Commercial

**David Strandberg**  
417 North Few Street  
Madison, WI 53703  
(608) 255-3966

# PARKS

Have you taken a walk out on the **Tenney Park breakwater** lately? You should! The breakwater is being given a real make over and you can see a masterpiece in progress. **Glacial rock** was placed over the old concrete rubble, **new light posts** and fixtures are being added, and a **new concrete surface** is being added. **New planters and benches** will be added and the presently unpaved portion of the breakwater will be finished next spring. The rainy summer hampered progress so the improvements won't be finished until **summer 1994**.

The county budgeted \$80,000 for the project. A full 60% will be reimbursed by state funds upon completion of the projects. Want some good news? The project is currently costing less than expected (about \$10,000 less)! How's that for efficient! Many thanks to the hard working county staff and our current (**Judy Wilcox**) and former (**Richard Linster**) county supervisors for their support.

*Ed Jepsen*



## WEAVING WORKSHOP

920 E. Johnson St. Madison, WI 53703 (608) 255-1066

*Yarns, fibers, reeds, feathers and beads;  
Equipment, tools, books and classes  
for weaving, knitting, spinning,  
basketry and dyeing.*

Hours:  
Monday-Saturday 10-6  
Sunday 12-4

*Over 20 years in the neighborhood!*

James C. Thomas  
Gallery Manager

Yvonne M. Thomas  
Sales Consultant

## Positive Images Gallery

Specializing in African-American Art, Accessories, & Framing

708 E. Johnson St.  
Madison, WI 53703

1-608-255-0277  
1-800-944-2518

## TENNEY NURSERY & PARENT CENTER

We are looking for people to substitute teach 2-5 year olds. If interested, please contact **Nancy Daly** or **Karen Natoli** for an application. 255-3250 (M-F 8am-4pm)

PIZZA		Each	Extra	White or wh. wheat crust;
	Cheese item		cheese	Freebies:
SM	\$ 5.25	1.00	0.90	Thick crust
MED	6.60	1.20	1.00	Extra sauce
LG	8.25	1.40	1.20	
XLG	9.70	1.50	1.30	

### SANDWICHES

Super Sub	\$ 3.50	Roast Beef Sub	3.60
Veggie Sub	3.50	Corned Beef Sub	3.60
Turkey Sub	3.60	Meatball or Suasage	3.50
Pastrami Sub	3.70	Meatball or Sausage	
Tuna Sub	3.50	Parmesan (w/cheese)	3.85

### DINNERS

Lasagne (House specialty), meat or veggie	5.65
Luncheon size	3.95
Meatball or Sausage Platter	4.25
Eggplant Parmesan	4.65
Spaghetti with tomato sauce	3.90
Extras: meatballs, sausage, mushrooms	0.95
Garlic Bread	1.35
Super Garlic Bread with sauce & cheese	1.95
<b>SALADS</b> ----- Dinner Salad	1.85
Antipasto	3.85
Chef Salad	3.85

## SUPREME PIZZA

"PIZZA WITH A CHOICE"

Hours:

Sunday thru Thursday 11 AM-11 PM  
Friday & Saturday 11 AM-12 PM

Counter Service & Carry-out

DELIVERY - 7 DAYS A WEEK, DAY & NIGHT



255-2500 912 E. Johnson

TLNA Coupon \$1.00 exp. 3-15-94

# GARDENS

## REYNOLDS GARDEN WINS ORCHID

The Reynolds Park Flower Garden at the corner of Dayton and Paterson streets received an **Orchid Award** in October from the **Capital Community Citizens** group. These awards are given annually to individuals or groups for making outstanding contributions to the environment of the community.

**Dee Rennick** and **John Cummings** accepted the award on behalf of the volunteers this year. A big thank you goes to those volunteers who took care of the garden this summer: **Martha Stephenson, Dave Raitt, Elena Sopoci, Stacy Lewis, Gerard Birlowski, Lori Thornton, Lisa Vance, Valerie Mellerop, and Bob Shaw.**



## GARDEN TOURS PAST & FUTURE

The Garden Tour organizers would like to thank all the volunteers who provided support services in the 1993 TLNA Garden Tour in September: **Sue Rebelow, Kristen Clausen, Tom Sullivan, Chris Ingersoll, Bob Shaw, Ruth Cadoret, Rowenna D'Costa, Bobbi Tannenbaum, and Kim (last name?).** We would also like to thank all the host gardeners on the tour: **Dick and Genevieve Halvorsen; Cathie Bruner; Jennifer Heise, James and Andy Wehrle; Shirley Rock; Mark and Luann Felton; Mary Jo Schiavoni, Jim Sturm, Anthony and Angela; Sandi Torkildson; Jeff Huxmann; Tom and Lynn Schmidt; Kay, Joe, and Sina Thompson.** Special thanks go to: **Mary Jo Schiavoni** for signing up the garden hosts, **Valerie Mellerop** for organizing the volunteers, **Rob Latousek** for publishing the program and poster, and **Dan Sage** for hosting another wonderful post-tour party.

Residents of the Tenney-Lapham neighborhood who would like to share or show off their gardens, landscaping, or yard art/structures are invited to join next year's Garden Tour. Contact **Tom Schmidt 256-1360** by **February 1**, and let us know when your garden is at its best, your new arbor completed, or your pond stocked with fish. Your responses will determine if and when next year's tour will occur.

We encourage your comments and suggestions. If you have a neighbor with a great yard, encourage them to contact us, or let us know who they are and we'll contact them. Help us make the **1994 Annual TLNA Garden Tour** a pleasure for viewers and gardeners alike!

## NEWSLETTER STAFF

<i>Editor</i>	<b>Rob Latousek</b>
<i>Asst. Editor</i>	<b>Bob Shaw</b>
<i>Copy Editor</i>	<b>Steve Dhuey</b>
<i>Artwork</i>	<b>Brian McCormick</b>
<i>Ad Billing</i>	<b>Judy Jones</b>

*J. M. Huxmann Gardening*  
426 North Few Street, Madison, Wisconsin 53704  
251-6068

**OLD MAN WINTER IS COMING, SO  
DON'T EVEN THINK OF GOING OUTSIDE  
TO SHOVEL. ASK ABOUT J.M.  
HUXMANN GARDENING'S LOW SNOW  
REMOVAL RATES.**

**426 N. FEW ST. 251-6068**



# **MADISON TRUST FOR HISTORIC PRESERVATION, INC.**

---

P.O. Box 296 Madison, Wisconsin 53701

November, 1993

Dear Tenney-Lapham Resident:

In the midst of this hectic season, I'd like to ask one small favor - that you consider becoming a member of the Madison Trust for Historic Preservation.

The Madison Trust has worked closely in the past with your neighborhood association to save the Collins and Connor houses from demolition. More recently, the Madison Trust worked with your neighborhood association to have the Parks Department restore Tenney Park's historic bridges: the Zimmerman and the Marston. One has been restored and restoration of the other is now scheduled.

Due to the ever-hastening erosion of Madison's physical past, Trust members approached their mission this year with renewed vigor and urgency. Among our 1993 accomplishments we include:

- **Presentation of our fifth annual awards program, which recognized five local owners of historic properties for their uncommon preservation efforts.**
- **Continued exhibition of our display boards in several well-visited venues (Firststar Bank on the Square, Hilldale Shopping Center, etc.) to highlight our preservation award winners.**
- **Development of a "Preservation Alert List" of Madison's most endangered properties that will become the basis of our public education and fund raising efforts for 1994.**
- **Sponsorship of a well-attended public information meeting on the restoration of the Capitol. We brought together representatives of both sides of the controversy regarding the approach now being taken to the remodelling of our State's most important public building.**
- **Development of a landmark nomination and slide show for Longfellow School -- an effort that led to unanimous Landmarks Commission endorsement.**
- **Development of landmark nominations for four buildings on the 100 block of West Main Street, most notably the Smith and Lamb building.**
- **Dissemination of three informative newsletters to over 700 members and friends.**

To continue and expand these efforts, we need your support. Your membership dues and generous gifts will help us preserve Madison's heritage for today's generations and for those yet to come. We thank you for your support, and wish you a very joyous holiday season.

With sincere appreciation,



Sally Mackie  
Board President

## MADISON TRUST FOR HISTORIC PRESERVATION, INC.

Enclosed is my check for renewal of my annual membership.

\$100 patron     \$50 sustaining

\$30 supporting     \$15 regular     \$\_\_\_\_\_

Additional donation for the Preservation Fund \_\_\_\_\_

Checks should be made payable to:

Madison Trust for Historic Preservation, Inc.

Mail to: P.O. Box 296, Madison, Wisconsin 53701

**Your contributions are tax deductible**

### MEMBERSHIP INFORMATION

Name: \_\_\_\_\_

Address: \_\_\_\_\_

\_\_\_\_\_ Zip \_\_\_\_\_

Phone: (Hm) \_\_\_\_\_ (Bus) \_\_\_\_\_

I would like to help with the following activities:

- |  |  |
|--|--|
| <input type="checkbox"/> Real estate projects        | <input type="checkbox"/> Publicity                   |
| <input type="checkbox"/> Programs and special events | <input type="checkbox"/> Membership and fund raising |
| <input type="checkbox"/> Historic research           | <input type="checkbox"/> Clerical                    |
| <input type="checkbox"/> Newsletter                  | <input type="checkbox"/> Other                       |

**THANK YOU FOR YOUR GIFT TO THE TRUST**

MADISON TRUST FOR HISTORIC PRESERVATION

P.O. Box 296

Madison, Wisconsin 53701